

**INCASSO CHIUSO 12W LED 4000K**

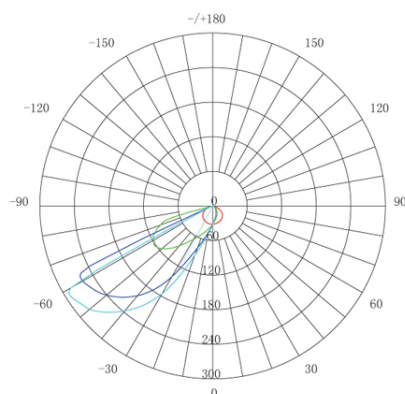
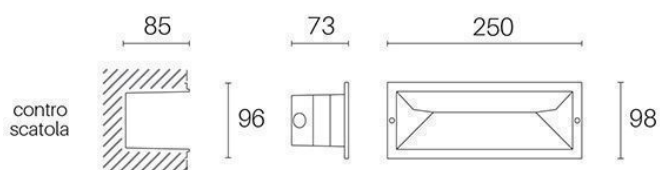
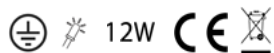
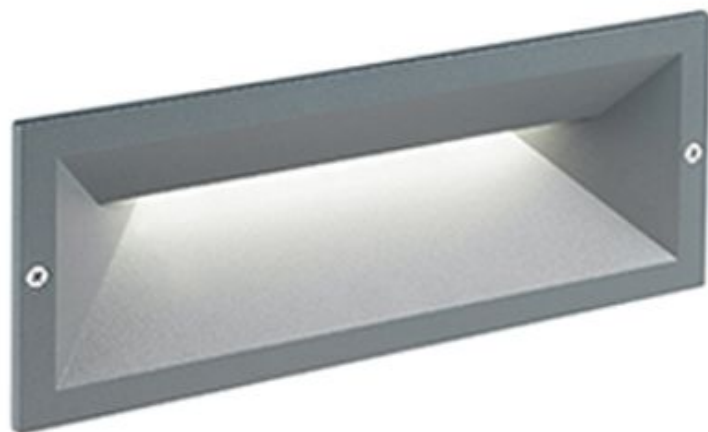
**serie: MASK**

**Art. 99152/16**

**EAN 8020588848483**

**Colore: Grigio**

Incasso in pressofusione di alluminio.  
 Diffusore in termoplastico opalino.  
 Controscatola in termoplastico.  
 Illuminazione con 12 LED SMD 3030.  
 Consumo: 12W.  
 Resa: 130W.  
 Risparmio energetico: 54%.  
 Flusso luminoso: 280 lumen.  
 Temperatura di colore: 4000°K. Luce naturale.  
 Alimentazione: 230V.  
 Grado di protezione: IP65



Height	Eavg, Emax	Angle: 34.99 deg	Diameter
1 m	32.88, 68.14lx		63.04cm
2 m	8.219, 17.03lx		126.07cm
3 m	3.653, 7.571lx		189.11cm
4 m	2.055, 4.259lx		252.14cm
5 m	1.315, 2.726lx		315.18cm

UNIT: cd  
 — C0/180, 120.1  
 — C30/210, 47.7  
 — C60/240, 36.4  
 — C90/270, 35.0