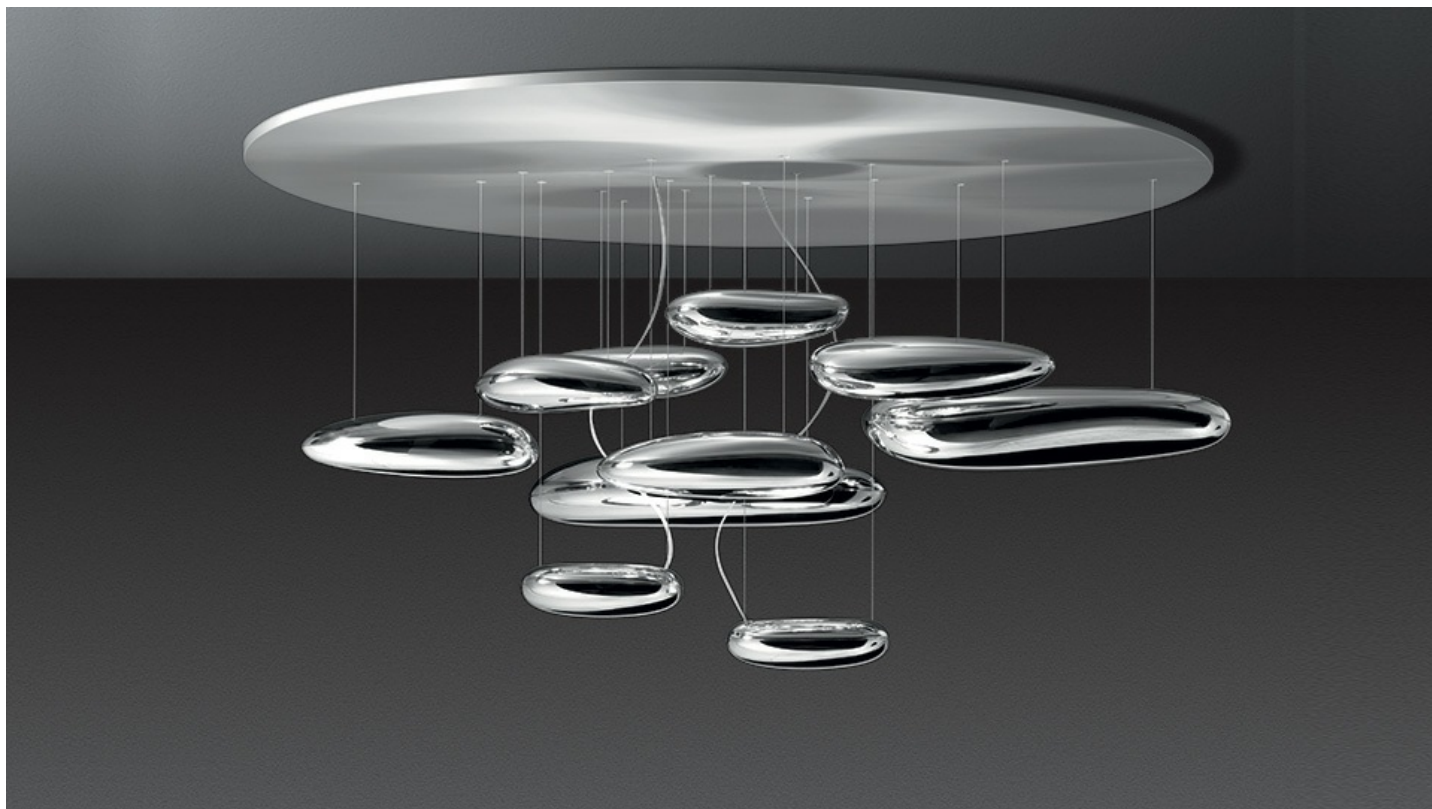


SCHEMA PRODOTTO

Mercury



Una lampada che consiste in una serie di grandi ciotoli fluttuanti sotto un disco di alluminio semplice e moderno. A loro volta, i ciotoli si riflettono l'un l'altro, facendo rimbalzare la luce tra le loro lisce superfici biomorfiche. Durante il giorno l'oggetto è una scultura che riflette le dinamiche della luce naturale e il movimento delle persone attorno a sé. Corpi luminosi in alluminio pressofuso; corpi riflettenti in materiale termoplastico stampato ad iniezione con finitura metallizzata; riflettore in alluminio stampato.

Grigio Metallico /
Specchio
●

LED Sospensione

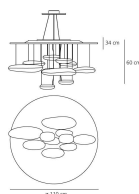


W	Dimensioni	Flusso Luminoso (lm)	CCT	Color	Code	Nome del prodotto
2x29W	H 55 cm	2x2692lm	3000K	●	1367110A	Mercury Led sospensione - Inox





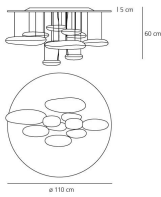

 960° IP20



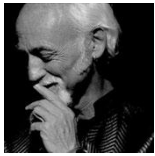
LED Soffitto



W	Dimensioni	Flusso Luminoso (lm)	CCT	Color	Code	Nome del prodotto
2x29W	H 55 cm	2x2692lm	3000K		1366110A	Mercury Led soffitto - Inox



I Designer



› Ross Lovegrove

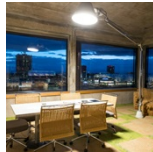
Progetti



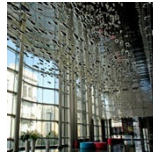
› Ramada Plaza



› J&T Headquarters



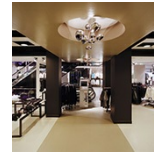
› Speicher 7



› National Theatre - Baku



› Biotherm



› New Yorker Flagship store



› Design Office



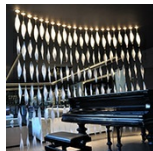
› CB Richard Ellis



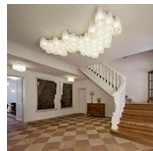
› HSBC



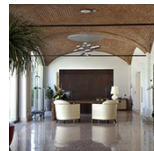
› Klima Hotel



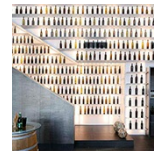
› Hotel Ambasciatori



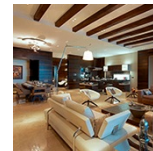
› Schloßl Oberotterbach



› The Ziba Hotel



› Winery Scheibhofer



› One Avighna Park



› Dream Hotel



› Uffici Generali Assicurazioni