

SCHEMA PRODOTTO

Tolomeo Sospensione Basculante



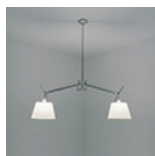
Struttura a bracci mobili in alluminio lucidato; diffusori in cartapergamena supportato da materiale plastico; snodi in alluminio brillantato. Codice riferito solo al corpo lampada.

Alluminio

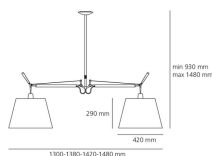


LED Qt32 Undimmable

N/D° IPIP20



| W | Dimensioni | Flusso Luminoso (lm) | Color | Code | Nome del prodotto |
|------|------------|----------------------|-------|----------|--------------------------------|
| 70 W | H 93 cm | | | 0630010A | Tolomeo Sospensione Basculante |



Accessori

Code

| | | |
|--|---------------------------------------|----------|
|  | TOLOMEO SOSP/PTE DIFF.PERGAMENA D.240 | 0372050A |
|  | TOLOMEO MEGA DIFF.PERG.320 | 0780010A |
|  | TOLOMEO MEGA DIFF.PERG.360 | 0780020A |
|  | TOLOMEO MEGA DIFF.PERG.420 | 0780030A |
|  | TOLOMEO MEGA DIFF.RASO 320 | 0781010A |
|  | TOLOMEO MEGA DIFF.RASO 360 | 0781020A |
|  | TOLOMEO MEGA DIFF.RASO 420 | 0781030A |
|  | TOLOMEO SOSP/PTE DIFFUSORE RASO D.240 | 0781050A |

I Designer



› Michele De Lucchi

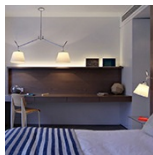


› Giancarlo Fassina

Progetti



› Chamber Theatre



› House Knightbridge